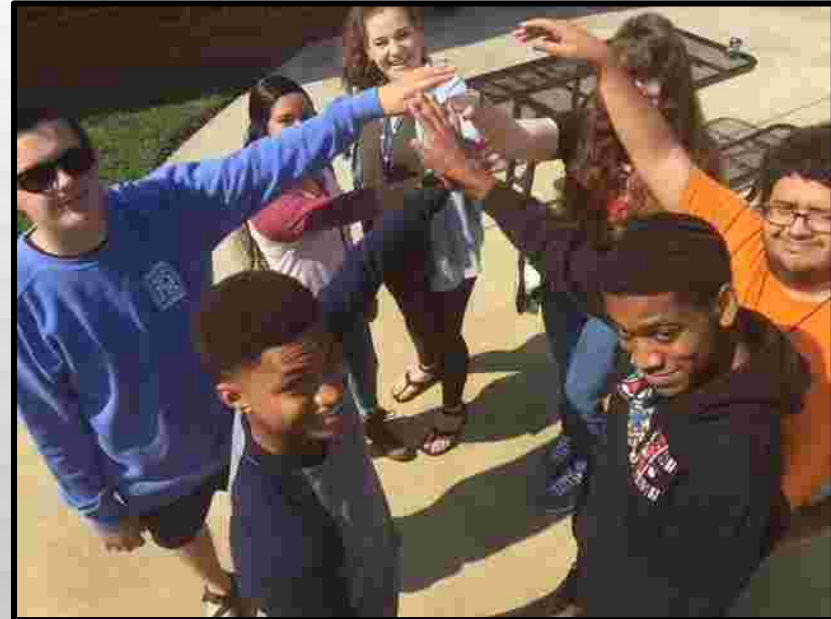


# EARLY COLLEGE @ JONES

• A DUAL ENROLLMENT CAMPUS

WITH BRENAU UNIVERSITY,  
LANIER TECHNICAL COLLEGE  
& THE UNIVERSITY OF NORTH GA!



# WHAT IS THE HALL COUNTY EARLY COLLEGE @JONES?

**HALL COUNTY STUDENTS TAKE COLLEGE  
CLASSES WITH LANIER TECHNICAL COLLEGE  
(LTC), BRENAU UNIVERSITY AND/OR THE  
UNIVERSITY OF NORTH GEORGIA (UNG)  
PROFESSORS ON OUR OWN COLLEGE  
CAMPUS @ JONES WITH OTHER HALL  
COUNTY DUAL ENROLLED STUDENTS!**



# CHARGE:

- PROVIDE RIGOR FOR ALL
- PROVIDE OUR DIVERSE GIFTED POPULATION ACCESS TO DUAL ENROLLMENT
- PROVIDE SUPPORT IN COLLEGE NAVIGATION FOR OUR DE STUDENTS
- GUIDE OUR STUDENTS TO BECOME COLLEGE & WORKFORCE READY
- MEET OUR COMMUNITY'S NEEDS FOR WORKFORCE BY DEVELOPING OUR BEST STUDENTS
- MAINTAIN HIGH SCHOOL COMMUNITY
- BRIDGE HIGH SCHOOL & COLLEGE SUCCESS BY DEVELOPING INDEPENDENT & CONFIDENT SCHOLARS



# HOW DOES EARLY COLLEGE WORK?

**LTC, Brenau and UNG professors teach courses on the Early College campus – same course – same rigor.**

**Transportation (w/wifi) is provided during the school day to/from high school.**

**Students may drive if approved.**

**NO COST for any component except supplies.**



**Students are part of main college campus life -as they desire- and still are part of their high school activities and classes!**



## HOW WE ARE DIFFERENT FROM OTHER DUAL ENROLLMENT / EARLY COLLEGES?



- **STUDENTS MUST MEET ELIGIBILITY REQUIREMENTS FOR OUR PARTNERS.**
- **STILL PART OF THEIR HOME HIGH SCHOOL**
- **TRANSPORTATION (WIFI), SUPPORT & LAPTOPS PROVIDED**
- **PROFESSORS TEACH CLASSES WITH SAME CURRICULUM –**
  - **SAME RIGOR**
- **COLLEGE CALENDAR ALIGNS WITH HALL COUNTY'S CALENDAR**
- **AT EC STUDENTS MAY TAKE COURSES IN MORE THAN ONE COLLEGE.**
- **MAY CONTINUE WITH COLLEGES AS FRESHMAN – IF IN GOOD STANDING.**



# UNIVERSITY OF NORTH GEORGIA @ EARLY COLLEGE

3.25 UNWEIGHTED + 970 SAT (480 math & 26 reading)  
OR ACT (20 C, 20 ENG, 18 MATH)



<div>UNG UNIVERSITY of NORTH GEORGIA</div> <div>University of North Georgia</div>		
	Fall	Spring
Block 1 8:55 – 9:45	ENG 1101 – M/W/F	ENG 1102 – M/W/F PSY 1101 – T/Th (8:55 – 10:10)
Block 2 10:50 – 11:40	MATH 1111 – M/W/F US HIST 2112 – T/Th (10:50 – 11:45)	ART APP – T/TH (10:30 – 11:45) MATH 1113 (Pre-Cal) – M/W/F
Block 3 12:15 – 1:10	ENG 1101 – M/W/F	ENG 1102 – M/W/F


UNG core academic classes are on a 5.0 Hall County scale for class rank and are weighted with AP/IB for HOPE GPA. Credits transfer to all University System of GA schools.



# LANIER TECH @ EARLY COLLEGE ACADEMICS

ACCUPLACER OR SAT: 25 Rdg, 26 W, 24 Math OR ACT: 17 Rdg, 16 Eng, 19 Math  
OR after sophomore year may have a HOPE GPA of 2.6

All core academic  
classes are on a  
5.0 Hall County  
scale for class rank  
and are weighted  
with AP/IB for  
HOPE GPA.  
Credits transfer to  
all University  
System of GA  
schools.

 Lanier Technical College		
	Fall	Spring
Block 1 8:55 – 9:45	ENG 1101 – M - Th MATH 1111 – M - Th MUSIC APP – M/W PSY 1101 – T/Th SPEECH 1101 (ENG) – M/W US HIST 2111 – T/Th	ENG 1101 – M - Th ENG 1102 – T/Th MATH 1111 – M - Th PSY 1101 – T/Th SPEECH 1101 (ENG) – M/W WORLD HISTORY – TEA
Block 2 10:50 – 11:40	ENG 1101 – M - Th MATH 1111 – M - Th MUSIC APP 1101 – M/W POL 1101 (GOV) – T/Th SPEECH 1101 (ENG) – M/W	ENG 1101 – M - Th ENG 1102 – T/Th MATH 1111 – M - Th PSY 1101 – T/Th SPEECH 1101 (ENG) – M/W WORLD HISTORY – TEA






# BRENAU @ EARLY COLLEGE

GPA of 3.0 AND one of the following-

SAT: Rdg/WR – 540 **OR** ACT: Rdg – 20 **OR** Accuplacer: Rdg 68 & SS 74

 Brenau University		
Time: 9:50 – 10:45	Fall	Spring
	ECON – BA 206 – M/W	ECON – BA 206 – M/W <u>AMER LIT – time TBA</u> <u>BIOL 101 w/lab – time TBA afternoon</u>





# LANIER TECH CERTIFICATES OFFERED @EARLY COLLEGE

ANIMATION AND GAME DESIGN SPECIALIST

CHILD DEVELOPMENT SPECIALIST\*

CRIMINAL JUSTICE SPECIALIST

DESIGN AND MEDIA SPECIALIST\*

EARLY CHILDHOOD CARE & EDUCATION\*

FIREFIGHTER 1

HEALTH INFORMATION TECHNOLOGY  
SPECIALIST

NURSE AID (CNA)

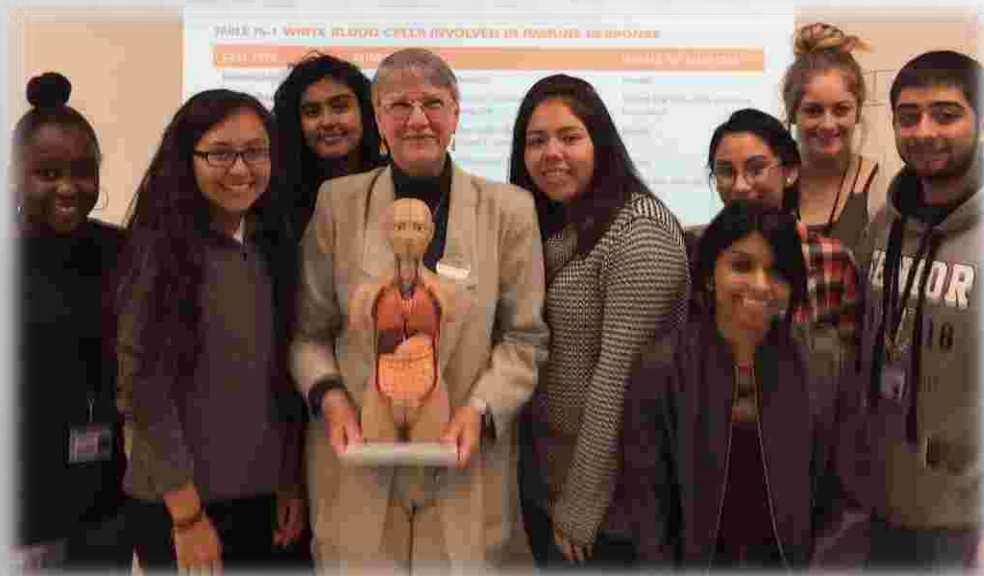
\*STARTS FALL 2019



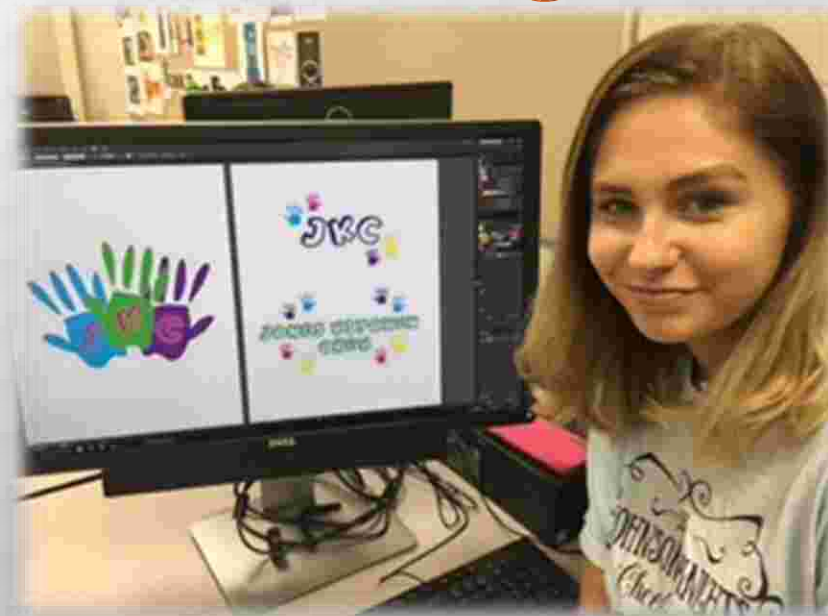
# Animation



# Healthcare



# Fire Fighter



# HIMT



# LANIER TECH CERTIFICATE OFFERINGS @ EARLY COLLEGE



Prepares students in  
marketing and design  
concepts:  
Illustrator, Photo Shop, Print  
Layout, Web Design and  
Animation  
Skills for your business too!

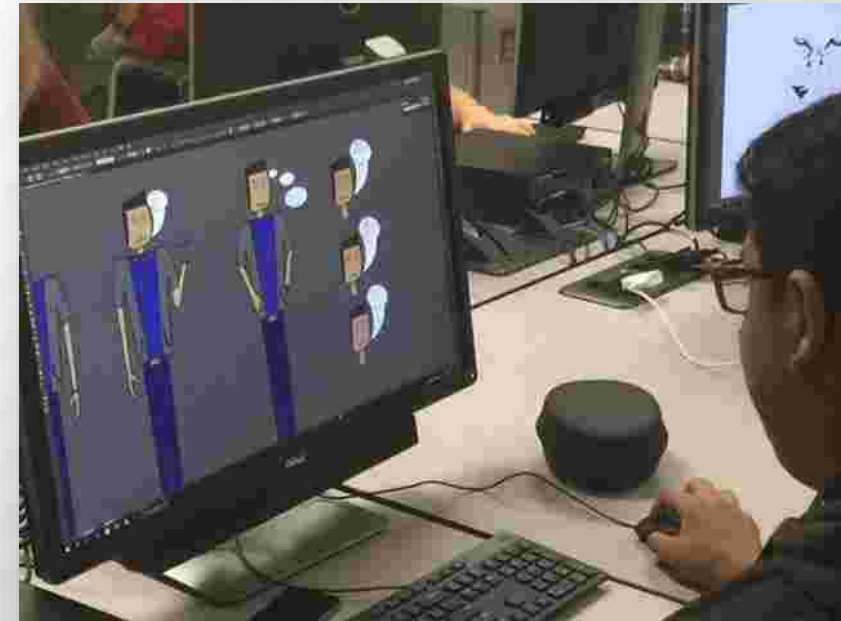


## **Design & Media Production**



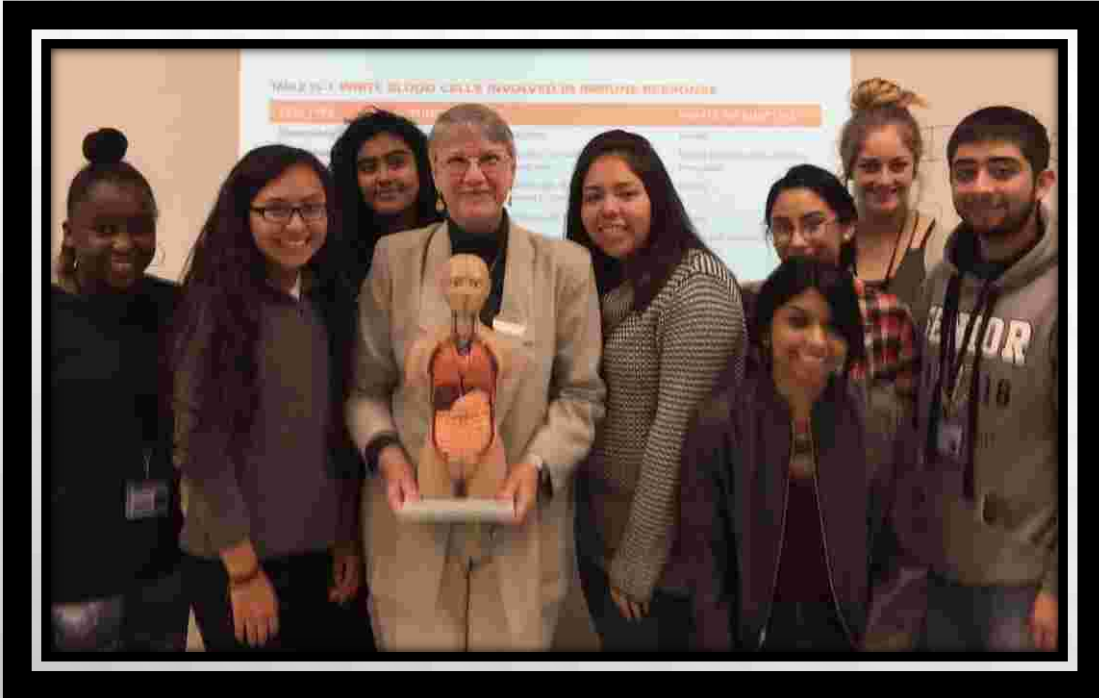
# LANIER TECH CERTIFICATE OFFERINGS @ EARLY COLLEGE

Prepares students on industry standard software to work in animation & interfaces for the game development industry, simulation development, model fantasy characters for games, and other web related fields.



## **Animation & Game Design**

# LANIER TECH CERTIFICATE OFFERINGS @ EARLY COLLEGE



**The Health Information Technology Specialist** certificate introduces the student to the career of health informatics. This certificate also leads directly into the Healthcare Information Management Technology Degree.

64 careers and immediate jobs in our area! Average start is \$45,000!

## Health Information Tech Specialist

# LANIER TECH CERTIFICATE OFFERINGS @ EARLY COLLEGE



The Nursing Assistant Certificate provides the educational opportunities to obtain the skills to secure a position as a nurse aid. You may also continue to gain a degree in this area. ONE year to this certificate and then test for your CNA!



**ONLY** open to rising **HS juniors & seniors.**  
**LIMITED SPACE!**

## **NURSE Aid & CNA**

# SCHEDULE

**STUDENTS MAY STILL TAKE AP, IB, WBL, HONORS, & ELECTIVES AT THEIR HOME HIGH SCHOOL. THEY ALSO MAY STILL PARTICIPATE IN ATHLETIC & EXTRACURRICULAR ACTIVITIES.**

## DE Classes with Travel Built in!

Students may take 1 – 6<sup>th</sup> Br/LTC/UNG  
courses in any combination per  
semester if accepted to  
college/university.

**ANY combination:  
FIRST – SIXTH periods**



**Take 1 block**

**Travel, class\*, travel back**

**Take 2 blocks**

**Travel, class\*, break, class\*, travel back**

**Take 3 blocks**

**Travel, class\*, break, class\*, lunch, class,  
travel back**

\* On days you don't have class = study or  
tutorial or break!



**CLASSES ARE IN SEMESTERS AT EC**

**EACH SEMESTER COLLEGE CLASS = 1 YEAR OF HS CREDIT**

**2 SEMESTER COLLEGE CLASSES = 2 YEARS OF HS CREDIT**

FALL	SPRING	Total HS credits	Total College Classes for FREE
1 CLASS	1 CLASS	= 2 year class credits	2 ~ 6 hours
2 CLASSES	2 CLASSES	= 4 year class credits	4 ~ 12 hours
3 CLASSES	3 CLASSES	= 6 year class credits	6 ~ 18 hours

**All core academic classes transfer to ALL  
University of Georgia system schools!**

# WHY EARLY COLLEGE? WHY WOULDN'T YOU!

- **TRANSPORTATION**
- **LAPTOPS PROVIDED**
- **LOW STUDENT /  
PROFESSOR RATIO**
- **STUDENTS W/ LIKE PEERS  
FROM ALL OVER HALL  
COUNTY**



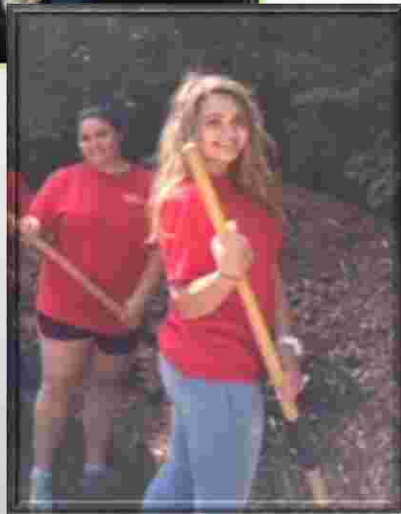
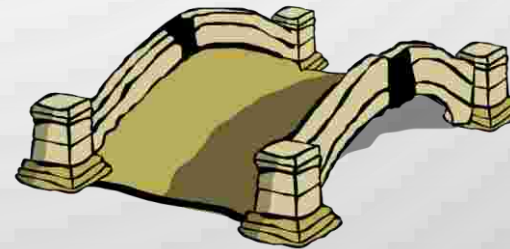
# FOUNDATION OF COMMUNITY PARTNERS

- WILLING TO PROVIDE FABULOUS PROFESSORS!
- SEEING A HIGH RETENTION RATE MATRICULATING TO INCOMING FRESHMEN AND
- 98+% SUCCESS RATE OF OUR DE STUDENTS.



**When students don't have class...  
BRIDGE TIME**

**Dedicated Study Time  
Career Prep  
Soft Skills  
Support / Tutoring as needed  
Service Opportunities  
Collaboration**



**CLOSE TO 50% OF ALL COLLEGE STUDENTS RECEIVE LESS THAN A 'C'  
IN AT LEAST ONE CORE CLASS  
BRIDGE NEEDED**



- **MAKING FRIENDS WITH STUDENTS FROM OTHER SCHOOLS.**
- **ASSISTANCE WITH APPLICATION, SCHEDULING AND TESTING!**
- **WE FEEL PRIVILEGED WITH FREEDOMS.**
- **QUIET SPACES TO WORK OR GET HELP AS NEEDED.**
- **HELPS ME TO BE MORE ORGANIZED.**
- **GOES WITH HALL COUNTY'S SCHEDULE!**
- **A REAL COLLEGE ATMOSPHERE!**
- **CARING AND CHALLENGING COLLEGE PROFESSORS!**
- **LOVE OUR BUILDING AND BISTRO.**
- **DIFFERENT SERVICE AND LEADERSHIP OPPORTUNITIES!**



**WHAT OUR STUDENTS SAY ABOUT EARLY COLLEGE!**



We know what college is going to be like now  
and so much more from Early College than just  
classes! We know we will be successful!

Carolina Frederick



# **FAQS ABOUT EARLY COLLEGE AND DUAL ENROLLMENT**

## **WHAT IS THE EARLY COLLEGE @JONES CAMPUS LIKE?**

- **IT IS A UNIVERSITY/COLLEGE CAMPUS - LEARNING COMMONS, STUDENT MEETING AREAS, COLLABORATIVE SPACES, AND CLASSROOMS EQUIPPED W/ 21<sup>ST</sup> CENTURY TECHNOLOGY.**



## **MAY I CONTINUE TO LANIER TECHNICAL COLLEGE OR THE UNIVERSITY OF NORTH GA OR BRENAU AS A FRESHMAN COLLEGE STUDENT?**

**YES! AS LONG AS YOU ARE IN GOOD STANDING.**





- **CAN I TAKE CLASSES AT LANIER TECH, BRENAU AND UNG?**
  - YES, IF YOU QUALIFY AT EACH COLLEGE.
- **CAN ANY HALL COUNTY HIGH SCHOOL STUDENT APPLY?**
  - ANY RISING 9<sup>TH</sup> – 12<sup>TH</sup> GRADE STUDENT IN HALL COUNTY MAY APPLY
- **WHAT IF I HAVE WORK BASED LEARNING OR HONORS MENTORSHIP?**
  - EARLY COLLEGE IS STILL AVAILABLE FOR THESE STUDENTS.
- **WHAT ABOUT EATING BREAKFAST AND LUNCH?**
  - BREAKFAST & LUNCH OPTIONS AT EARLY COLLEGE ARE AVAILABLE - TIED TO THE HOME HIGH SCHOOL ACCOUNT.



**MORE FAQ**



# EARLY COLLEGE @ JONES



# HOW TO GET STARTED:

- REMIND: TEXT @ECINFO TO 81010
- APPLY TO EC: [WWW.EARLYCOLLEGEHALLCO.ORG](http://WWW.EARLYCOLLEGEHALLCO.ORG)
- APPLY TO COLLEGE(S) OF CHOICE
- TAKE APPROPRIATE SAT OR ACT; FOR LANIER TECH OR BRENAU SEE YOUR COUNSELOR FOR ACCUPLACER TEST
- TURN IN DOCUMENTS TO COLLEGE AND EC
- TALK TO DEAN HOOD & COUNSELOR TO SCHEDULE!
- NOTE – CORRESPONDENCE FROM COLLEGE DOESN'T ALWAYS PERTAIN TO YOU! CALL EC WITH ANY QUESTIONS!



# Questions ???

**Check our website or contact Early College: (678-725-7026)**

**Web:** [www.Earlycollegehallco.org](http://www.Earlycollegehallco.org)

**Mrs. Michele Hood –** [Michele.hood@hallco.org](mailto:Michele.hood@hallco.org)

**Mrs. Meg Jett –** [meg.jett@hallco.org](mailto:meg.jett@hallco.org)

**Mrs. Claudia Goss –** [Claudia.goss@hallco.org](mailto:Claudia.goss@hallco.org)

**Facebook:** Early College Hall Co

**Twitter:** @EarlycollegeHC